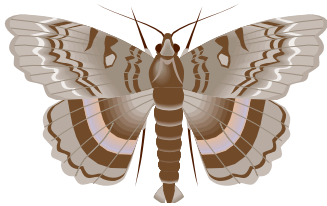


## Butterfly Gardening

Attracting butterflies is easy! It is just a matter of using the right plants in the garden. Select plants that butterflies use as food for their caterpillars and for nectaring adults.

Native plants are the main food source for butterflies but both natives and ornamentals are often used as nectar plants. Plant a variety of natives to ensure a wide range of butterfly species.

The loss of native vegetation -due to urban development- will greatly reduce butterfly populations. These can be saved by incorporating native plants in our urban landscapes.



### Moth Watch

- Moths are just as beautiful and fascinating to watch as butterflies. The Hummingbird moth and Underwing moth nectar at night on night blooming flowers like Datura and Moonvine.
- The Sphinx moth feeds on flowers such as Cypress Vine, Standing Cypress, and Nicotiana. Daybreak is the best time to view this moth.



- Butterflies frequent open sunny areas
- Provide water in your garden for butterflies and birds too!
- Expect some damage on larval food plants so plant plenty & plant them in an out-of-the-way area.



## Butterfly food plants

**Trees** : Willow, Hackberry, Oak, Wild Cherry, Locust, Eve's Necklace, and Soapberry

**Shrubs**: False Indigo, Cassias, Wax Myrtle, Sumacs such as Skunkbush, Smooth, Prairie Flameleaf and Evergreen

**Perennials**: Butterfly weed, Mexican Butterfly Weed, Asters, Wild Indigo, Artemisia

**Herbs**: Parsley, Dill and Rue

**Grasses**: Little Bluestem, Indian Grass, Switch Grass

**Vines**:Snapdragon Vine, Pipevine, Milkweed Vine, Passionflower Vine

## Species preferences

Silver Spotted Skipper

Legumes - Locust trees, Wisteria, False Indigo Bush

Eastern Tailed Blue

Legumes – Baptisia

Hairstreak

Esperanza – Balloon Vine

Henry's Elfin

Black Cherry

Reakerts Blue

Dalea, Acacia

Dogface

Legumes - False Indigo Bush,

Clouded Sulphur

Legumes - White Clover, Sweet White Clover

Sleepy Orange

Legumes - Senna , Cassia

Partridge pea

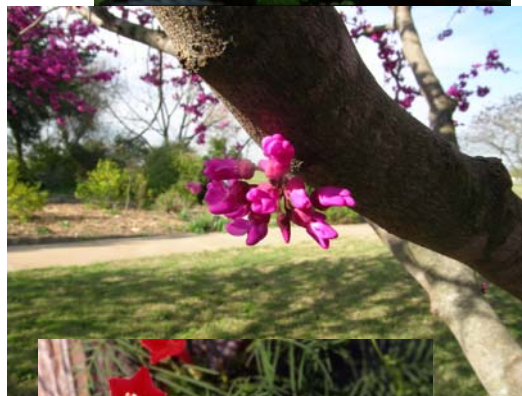
Black Swallowtail

Prairie Parsley



## Specie cont.

[Arogos Skipper](#)  
 Giant Bluestem, Switch  
 Grass, Little Bluestem  
[Delaware Skipper](#)  
 Big Bluestem, Switch Grass  
[Red Banded Hairstreak](#)  
 Sumac - Wax Myrtle - Oak  
[Spicebush Swallowtail](#)  
 Sassafras - Sweet Shrub  
 Red bay- Spice Bush  
[Tiger Swallowtail](#)  
 Fraxinus - Wild Cherry  
 Sweet Bay  
[American Snout](#)  
 Hackberry & Sugarberry  
[Hackberry](#)  
 Sugarberry & Hackberry  
[Tawny Emperor](#)  
 Hackberry, Sugarberry  
[Giant Swallowtail](#)  
 Citrus- Trifoliolate Orange,  
 Hercules Club, Rue  
[Question Mark](#)  
 Hackberry, Elms, Nettles  
[Viceroy](#)  
 Poplar, Willow, Apple  
[Queen](#)  
 Milkweed  
[Monarch](#)  
 Milkweed  
[Black Swallowtail](#)  
 Parsley, Dill, Queen  
 Ann's Lace, Wild Carrot  
[American Painted Lady](#)  
 Artemisia, Sunflower  
[Buckeye](#)  
 Snapdragon Vine, In-  
 dian Paintbrush, Ruellia  
[Texas Crescentspot](#)  
 Flame Acanthus  
[Spring Azure](#)  
 New Jersey Tea



## Nectar Plants

Lantana, Zinnia,  
 Daisies, Cosmos,  
 Verbena, Frogfruit,  
 Monarda, Marigold, Salvia,  
 Cypress Vine, Mexican  
 Butterfly Weed, Butterfly  
 Weed, Cardinal Flower,  
 Tahoka Daisy,  
 Dalburg Daisy, Purple  
 Coneflower, Mistflowers,  
 Sunflowers, Liatris, Rud-  
 beckia, Sneezeweed,  
 Ironweed, Yarrow, Turk-  
 scap, Texas Star  
 Hibiscus, Standing  
 Cypress, Clammy Weed,  
 Aster, Goldenrod, Butter-  
 fly Bush, Phlox, Kidney-  
 wood, Redbud, Dalea,  
 Penta, Cutleaf Daisy, In-  
 dian Blanket, Mountain  
 Mint, Gomphrena, Texas  
 Thistle, Purple Prairie Clo-  
 ver, Boneset, Lavender,  
 Rosemary, Partridge Pea,  
 Frostweed, Brown-eyed

### Create a puddling box.

Butterflies drink from muddy areas gleaning needed minerals. This is called "puddeling".

Mix ½ cup salt with 1 gallon of sand. Pour in a waterproof box and keep moist. Do not put directly on soil as the salt will contaminate it.